

FIND

GOLD OF THE RED

EXPLORE the Red River Valley
for your chance to WIN a share of **\$3000**

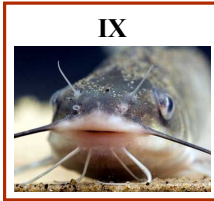
IN CASH!



This week's 1st clue

Every week for 6 weeks, specific destinations will be selected along the Red River Corridor from Selkirk to Emerson, including Winnipeg.

1. A clue will be printed weekly with additional clues available on the www.routesonthered.ca website;
2. Based on the clues, participants are to find a location, take their photo in front of it, then send the photo via e-mail to info@routesonthered.ca no later than 1 PM on the following Monday. This week's deadline is July 19.
3. Find the location and get a chance to **WIN \$500 WEEKLY!** Winners will be contacted weekly with their name and photo uploaded to the Routes On The Red Website.



CLICK ON

www.routesonthered.ca
for details on how you can
WIN an additional grand
prize draw worth **\$1000**
of product !



No purchase necessary. Official contest rules available at www.routesonthered.ca.
Contest runs June 23 to August 2, 2010.
Winners must be in photo.



R.M. of Franklin, RM Ritchot, R.M. East St. Paul, Town of Morris